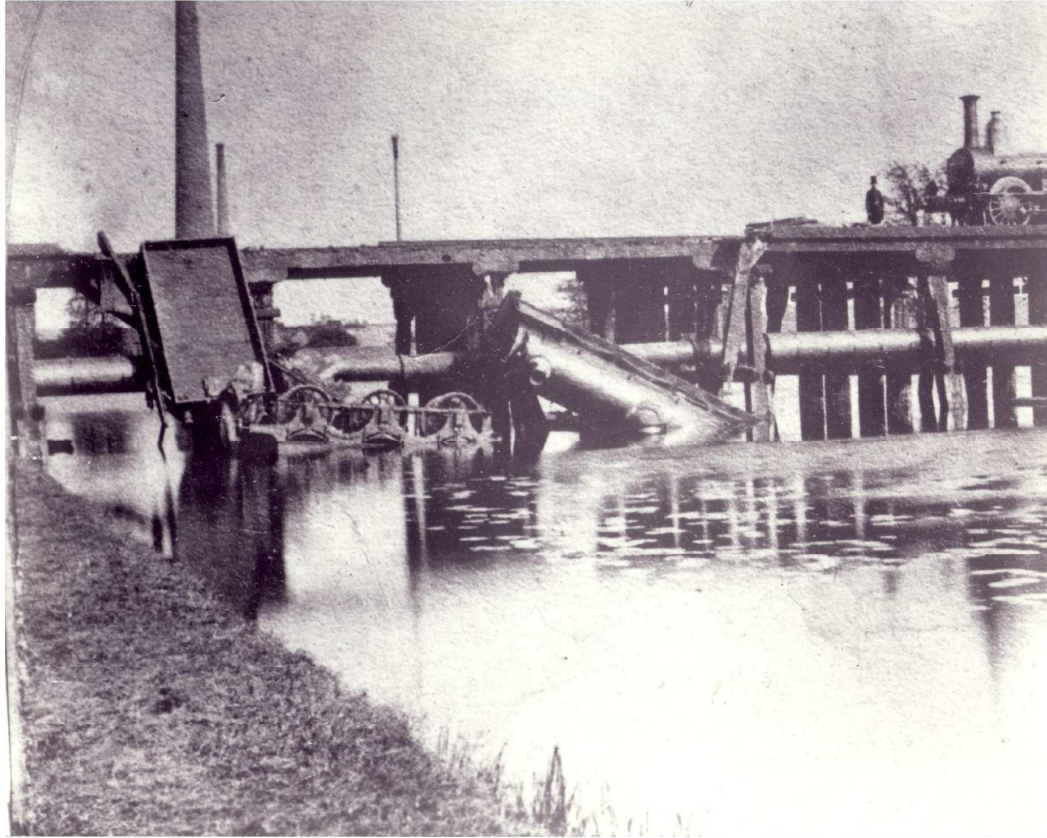


Elwells Pool, Wood Green, Wednesbury



The photograph of a train accident at Elwells Pool in 1859 captures the earliest known record of a South Staffs Waterworks asset. The water main which ran from Walsall Reservoir to Wood Green Pumping Station can clearly be seen supported on the railway bridge trestles. The railway, although now disused, still exists and the 2010 photograph shows a recently constructed bridge in the approximate location of the accident site. The photograph was taken from the access road to the Axletree Retail Park.