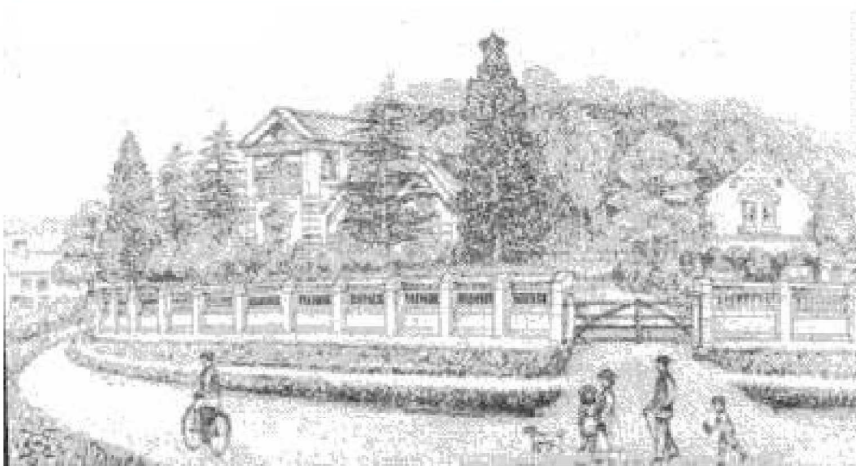


Hopwas Pumping Station, Lichfield Road,



Hopwas was originally constructed by Tamworth Waterworks in 1879 and equipped with two Gimson steam driven pumps. The Tamworth undertaking was taken over by South Staffs Water in 1962. The steam pumps ceased operation in the early 1960s and were removed for subsequent preservation at other sites in 1986. The vacated building was sold for residential development in 2004. It was pleasing to see that the decorative Victorian brick wall adjoining the Lichfield Road was rebuilt and the drinking fountain restored.